

Enerflex SP 300



EnerCon

Innovation Drives Us

KEY FEATUTURES

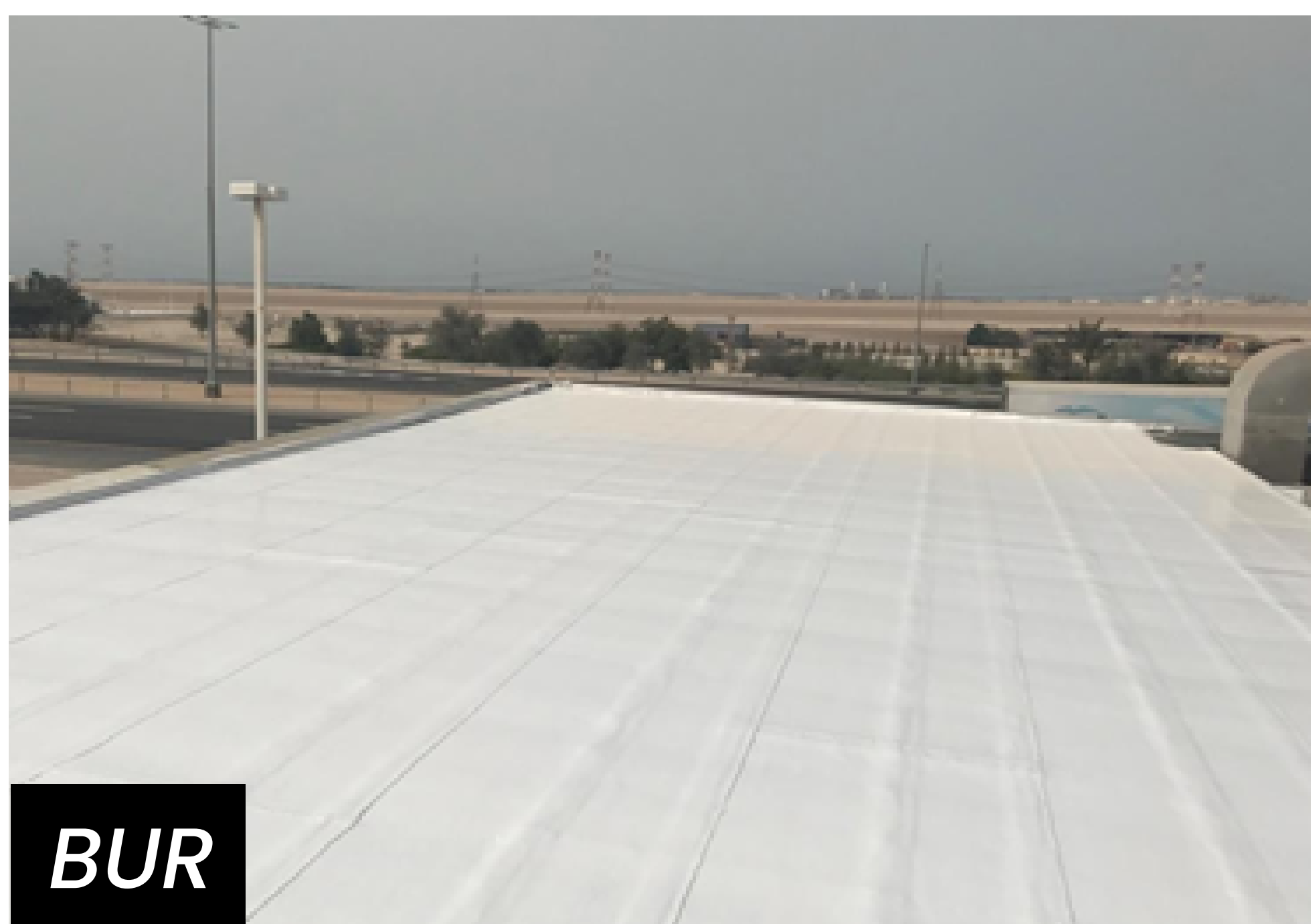
- 100% Waterproof – Hydrophobic in nature ✓
- Extends roof life and reduce maintenance costs ✓
- Highly reflective Cool Roofing helps lower utility bills ✓
- Strongest adhesion with almost all types of substrates ✓
- Extremely durable, weather resistant and UV resistant ✓
- Extremely easy application by brush, roller or airless spray ✓



ENERFLEX-SP 300 Premium 100% Silicone Roof Coating: Specially designed to maintain highest level of waterproofing and solar reflectivity even as it ages. Superior performance and durability for all types of roof restorations. Single component, moisture cured, fluid applied and high solids roof coating. Formulated with solvent free polymers with no harmful effect to the environment. ENERFLEX-SP 300 creates a shield which not only provides waterproofing and cool roofing but also extends the life of your roof. Ideally suited for flat and pitched roofs.

Premium Liquid Silicone Roof Coating

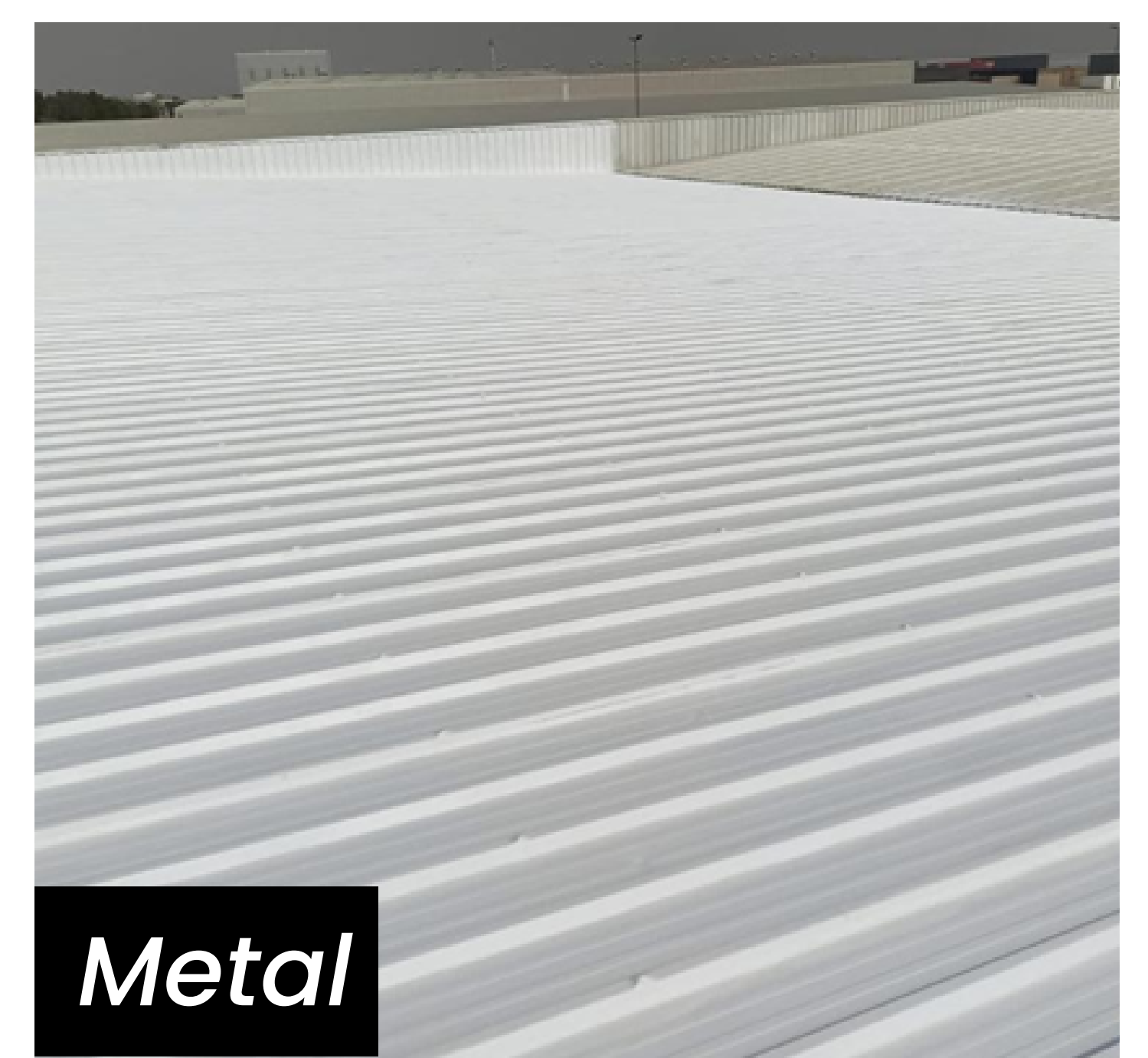
100% Silicone White Roof Coating - Solvent Free



BUR



Concrete



Metal



Pond-Proof® Technology
Best Protection for Ponding Water
Situations to Help Prevent Premature
Adhesion Failure



ASTM INTERNATIONAL

Enerflex SP 300

EnerFlex-SP 300 is ENERCON's Premium Liquid Silicone Roof Coating. EnerFlex SP 300 is 100% Silicone, solvent-free, single component, moisture cured liquid roof coating. It cures to form a highly elastic, impermeable, and monolithic membrane. ENERFLEX-SP 300 creates a shield that is ideally suited for flat roofs and it protects simultaneously against ponding-water and acts as Cool Roof coating by reflecting UV & sunlight. It is specially designed to maintain maximum reflectivity of heat even as it ages.

Applicable Substrates:

ENERFLEX-SP 300 can be directly applied to almost all types of substrates such as metal, concrete, wood or on top of any existing coatings such as, TPO, EPDM, Singly Ply membrane, Smooth or Granulated membrane

Preparation:

The surface must be clean from loose particles, dirt, dust, oil, etc. ENERFLEX-SP 300 should generally be applied on dry and sound surfaces. Old coatings should ideally be removed if they are loosely held on to the existing surface. The substrate should be pressure washed prior to coating application. A moisture content of less than 5% is generally recommended in concrete surfaces. All joints, cracks and extrusions should be sealed using ENERSEAL-XB or ENERSEAL Tape prior to the application of ENERFLEX-SP 300. EPDM roofs may require aggressive power washing and need to be cleaned twice to remove all surface contamination

Priming:

ENERFLEX-SP 300 can mostly be applied without the use of a primer. However, it is recommended to use Ener-PrimeIII as bleed-block primer on top of bitumen surfaces or Ener-Prime 222 as Anti-Rust primer for rusted metal sheets. Generally, an adhesion test is recommended before application to determine the requirement of a primer to improve adhesion.

Mixing:

Mix well prior to the use, as coating may settle during storage. Mixing can be done using a drill or a mixing paddle. Use a clean and min. 3" diameter mixing paddle or hand mix with a suitable and clean paddle until consistent viscosity is achieved. Do not thin the product

Application:

ENERFLEX-SP 300 can be applied using nap roller, soft brush, or airless spray gun. ENERFLEX SP 300 can be applied in single coat application, however, in case of second coat application, wait for at least 6 – 8 hours after first coat application. Drying time is significantly affected by the ambient temperature and humidity (see weather conditions). Use a 1/2" nap roller, cover-dip roller directly into pail and apply. Alternatively pour product onto flat roof surface and roll out evenly, or spread with a squeegee then immediately back roll for smooth finish. Airless spray can also be used to spray evenly to achieve consistent coverage. Textured surfaces may require additional coats to achieve a minimum 30 mils dry film build. To make walkways, coarse quartz particles can be sprinkled on top of freshly applied topcoat. ENERFLEX-SP 300 is 100% UV and color stable.

For more details:

Website : www.enercon-group.com

Address : Tampa, Florida, USA

TECHNICAL PROPERTIES

Characteristics	Values
Density	1.36 g/cm ³
Solids by Weight	95%
Solids by Volume	95%
Viscosity	6,000–8,000 cps
Tensile Strength	220 psi
Elongation at Break	250%
Hardness Shore A	40
Water Vapor Permeability (73°F & 75% RH)	10.2
Reflectivity (initial)	88
Emissivity	89
SRI	III
VOC	-
Drying Time - Tack Free (73°F & 75% RH)	70 min

Weather Conditions:

Rainy weather should be avoided. It is recommended to carry out ENERFLEX-SP 300 application between temperatures 40°F to 120°F and relative humidity lower than 70%.

Coverage:

Coverage of 1.9 – 2.8 gallons per square (1.2 – 0.8 m²/L) is recommended and can be achieved in a single coat. However, consumption may vary depending on surface texture, porosity, and application specification and additional coats may be required.

Shelf life:

Minimum 18 months from the date of production in sealed containers (when stored in dry, cool, and covered area)

PRECAUTIONS

Storage & Handling:

Protective clothing, gloves, and eyewear should be used during application. Do not heat the pails or place the pails near the heated surface. Keep the pails sealed, when not in use. Material must be stored in a shaded area with temperatures between 50 °F and 85 °F. Storage at temperatures outside these conditions or at relative humidity over 65% will reduce the shelf life. Ensure to tightly seal the pail after opening and when not in use. Opened pails must be used within 3 – 5 days after opening. If a skin forms at the top of opened pail, remove prior to mixing material. When transporting this product, ensure that the lid and openings are tightly sealed. Do Not allow products to tumble or shift as this may cause leakage to occur. Do not transport on passenger seats or inside the passenger compartment of any vehicle.

Email: info@enercon-group.com

Contact: +1 786 726 0788